

USEF NATIONAL RATED



SEPTEMBER 20 TO 24, 2023

USEF PREMIER RATED | WCHR MID ATLANTIC
VHSA | MHSA | NAL | WIHS | TAKE2 TB

\$5,000 MIDDLEBURG CLASSIC DERBY
&
\$10,000 USHJA INTERNATIONAL DERBY

BENEFITS



**FOOD &
FRIENDS®**

Delivering hope, one meal at a time®

SALEM FARM SHOWGROUNDS
8300 JOHN S. MOSBY HWY, UPPERVILLE, VA 220184



Welcome to the 2023 Middleburg Classic

The Middleburg Classic Horse Show was created by a small group of friends hoping to make an impact on the AIDS epidemic, which had dramatically affected the horse show industry. As the show celebrates its 30th anniversary, we once again invite people to join us on the beautiful Salem show grounds for another September week.

Shows like this are important to both our local community and broader equestrian community. It provides significant business for restaurants, hotels, vets, trainers, farriers, farm supply companies, and the considerable team that helps put on events like this. But many of us came off putting on Upperville and Loudoun and we can attest to the dramatic increase in costs and difficulty finding people to work these jobs. We can literally say that these business models are not long-term viable without the support of sponsors.

Middleburg Classic continues to support Food and Friends which has expanded beyond providing meals to AIDS patients to now providing medically tailored meals and medical nutrition therapy to the seriously ill in the DC area.

FEATURED CLASSES

\$5,000 Middleburg Classic 3' Derby

Friday, September 22nd, 2023

\$10,000 USHJA International Hunter Derby

Saturday, September 23rd, 2023



***FOOD &
FRIENDS***[®]

Delivering hope, one meal at a time[®]



GONE ... BUT NOT FORGOTTEN



PAUL CIRA



DAVID DYE



KENNY DUMSICK



STANLEY GARROT



SAM HIGDON



BILL HAMMERSLY



BERNIE LAROQUE



WHIT LINEWEAVER



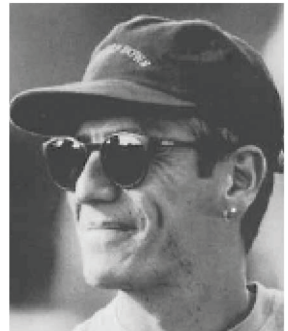
MARK MELENDEY



LEE MCGEHEE



JIMMY PIEHLER



GEORGE SAYO



KEVIN SHIELDS



ALLEN SMITH



SHOW OFFICIALS

Judges | Danny Robertshaw |
Jack Towell | Lyman Whitehead | Sue Ashe
Stewards | Celia Thomas | Cricket Stone
Hunter Course Designer | Alan Lohman

HORSE SHOW STAFF

Manager : Stephanie Lightner
Technical Coordinator: Gerry Briggs
Facility Manager : Tommy Lee Jones
Event Director | Sarah Appel
Office Manager | Brett Waters
Show Secretary | TBD
Office Staff | TBD
EMT | Jamila Flowers
Farrier | Scott Whitehead
Veterinarian | Dr. Anna Russau
Photographers | Teresa Ramsay & Al Cook

SHOW SERVICES

Veterinary Hospital | Marion duPont Scott Equine Medical
Center | 703-771-6800
Shavings, Feed & Hay | Horse Show Office | 888-823-3337
Tents | Virginia Tent Rental

SHOW COMMITTEE

Competition Licensee | The Middleburg Group
Shelby Bonnie | Jim Cloonan | Virginia Fout
Lauren Peterson | Scott Williamson
Show Trainer Committee: Tom Wright | Amanda Steege
John French | Chris Wynne | Kitt Barker
Denice Perry | Snowden Clarke | Louise Serio

Contact Information During Horse Show

Salem Farm
8300 John S. Mosby Highway
Upperville, VA 20184
540-486-5658

Office@middleburgclassic.com | middleburgclassic.com
Class entries and schedule available at: showgroundslive.com

Contact Information Prior To Horse Show

MCHS/PJC
PO Box 601
Upperville, VA 20185
415-359-5455



Friday afternoon 4pm September 22nd *\$5,000 Hunt & GO Middleburg Classic Derby*

Entry fee is \$300.00. A minimum of 12 horses for the class to be held.

Once the order of go is posted, any scratches will forfeit \$300 of the class fee.

Fence heights 3' with options set at to 3'3"

Awards 1st to 12th place - Top 6 Riders to Ride for Ribbons

Prize money will be as follows

\$1,500, \$1,100, \$ 650, \$400, \$300, \$250, \$200, \$ 150, \$150, \$100, \$100, \$100.

The \$5,000 Middleburg Hunt and Go format will consist of two phases, one Classic Hunter and one Handy Hunter. **The phases will be jumped consecutively.** All participants will complete both the Classic and the Handy portions even if penalties (rails, refusals, etc.) are incurred. Major penalties (falls, 3 refusals, off course, etc.) will result in elimination.

The Classic Hunter Round, consisting of 6-8 fences with 2 high options, shall be judged on quality, movement, jumping style, manners and way of going.

After the completion of the classic round horses will pick up their pace and pass through a set of markers to begin their handy portion of the class. **The Handy Hunter Round**, consisting of 5-7 fences with 2 high options, shall be judged on quality, movement, jumping style, manners and way of going. Pace, brilliance, and a shorter track are to be rewarded. A horse/rider may not jump decorations or other obstacles in order to create a shorter track.

Scores will be given by each judging panel, with one score for the Classic Round and one score for the Handy Round. Bonus points of one point per high option jump will be added to each judging panel's score. The scores from each panel will be added together to determine the total score and placement. Prior to the start of the class one judging panel must be designated as the tie breaker.

In the event of a tie, Panel 1 breaks the ties for the Classic round/phase, Panel 2 breaks the tie for the Handy round/phase and Panel 1 breaks ties in the overall.

FENCE AND COURSE TYPE

Obstacles must simulate those reminiscent of the hunt field and the course must offer a variety of Derby jumps with different appearances such as: natural post and rail, stone wall, white board fence or gate, coop, aiken, hedge, oxer, brush, logs, natural foliage. Natural obstacles such as banks and ditches are allowed. (The bank can be an option)

A minimum 2" difference is required for the back element of an obstacle.

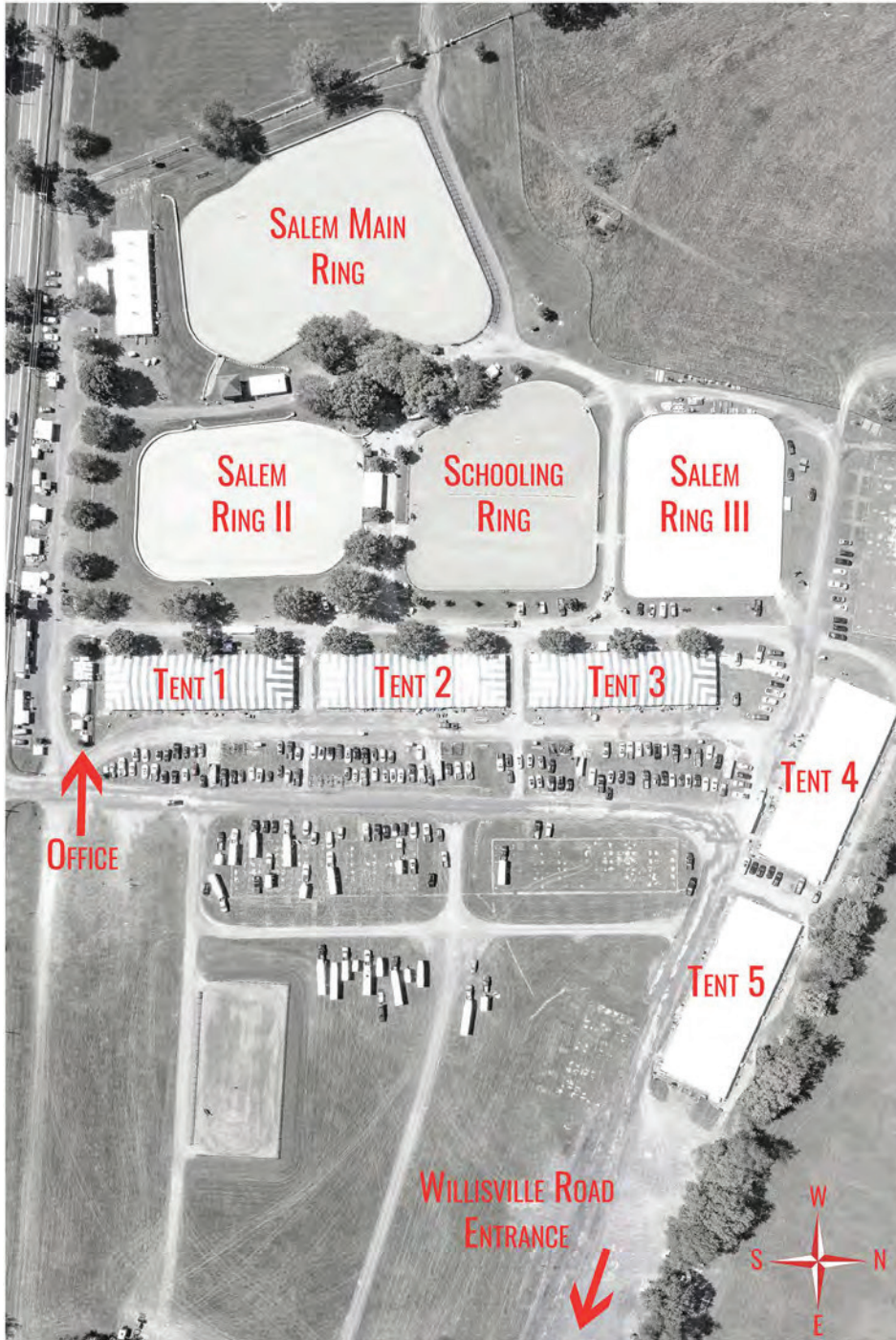
Ground lines are not to exceed 18" in depth from the vertical plane of the jump.

For appropriate jumps, no ground line is necessary.

The jumpable portion of any obstacle must be a minimum of eight feet on its front face.

Flat cups may only be used for obstacles involving logs and/or in accordance with Federation rules.

For the handy portion, the course should simulate riding over hunt country and must include a minimum of three of the following handy options: tight turn options, different tracks, clever options for jump approaches, pen type obstacles, hand gallop a jump, trot a lowered obstacle not to exceed 2'0" in height.



ENTRANCE ONLY OFF OF WILLISVILLE ROAD

HOST HOTELS

Request the horse show rate when making your reservations.

Holiday Inn

165 Town Run Lane, Stephens City, VA 22655
(540) 869-0909
(?? miles ~ ?? minute drive)

Quality Inn

167 Town Run Lane, Stephens City, VA 22655
(540) 869-6500
(?? miles ~ ?? minute drive)

ADDITIONAL LODGING

[Airbnb.com](#) | [Vrbo.com](#)

Airwell Bed & Breakfast

35399 Snickersville Tpk, Purcellville, VA 20132
[airwellbnb.com](#) | (540) 554-2166
(10.5 miles ~ 15 minute drive)

Briar Patch Inn *(Pet Friendly)*

23130 Briar Patch Lane, Middleburg, VA 20117
[Briarpatchbandb.com](#) | 866-327-5911
(14.5 miles ~ 24 minute drive)

Goodstone Inn

36205 Snake Hill Road, Middleburg, VA 20117
[Goodstone.com](#) | (540) 687-4645
(11 miles ~ 21 minute drive)

Hilton Garden Inn Winchester

120 Wingate Drive, Winchester, VA 22601
[Hiltongardeninn3.hilton.com](#) | (844) 639-1766
(21.5 miles ~ 28 minute drive)

Hunt Country Accommodations

[huntcountryaccommodations.com](#)
[Julie@huntsescapes.com](#) | (540) 687-0017

La Quinta

1055 Millwood Pike, Winchester, VA 22602
[Aloftwinchester.com](#) | (540) 678-8899
(20 miles ~ 24 minute drive)

Little River Inn

39307 John Mosby Hwy, Aldie, VA 20105
[Aldie.com](#) | (703) 327-4742
(15 miles ~ 25 minute drive)

Salamander Resort & Spa

500 North Pendleton St, Middleburg, VA 20117
[Salamanderresort.com](#) | (540) 687-3710
(10.5 miles ~ 18 minute drive)

The Red Fox Inn

2 E Washington Street, Middleburg, VA 20118
[Redfox.com/lodging.html](#) | (540) 687-6301
(10 miles ~ 17 minute drive)

Welbourne Bed & Breakfast *(Pet friendly)*

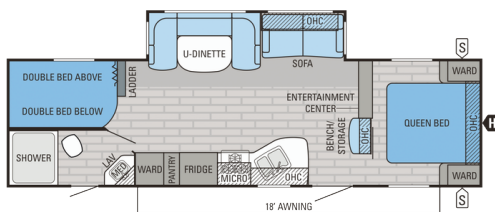
22314 Welbourne Farm Ln, Middleburg, VA 20117
[Welbourneinn.com](#) | (540)687-3201
(7.2 miles ~ 15 min drive)



Official RV Provider of the Middleburg Classic
& Piedmont Jumper Classic

FREEDOM RV

RENTALS & SALES



Need to rent an RV?

Choose from motorized units or pull behind units or vans.



Need accommodations for the horse show?

We can deliver and set-up a rental unit onsite.

Choose from Motorized Units, Pull-Behind Units or Vans!

11256 Old Telegraph Road | Ashland, VA 23005 | **804-798-3379** | [freedomrv.com](#)

RULES & REGULATIONS

REMINDER:

All USEF Life and Senior Active members, as well as participants who have regular contact with minor athletes, are required to comply with the U.S. Center for SafeSport training requirement to be eligible to participate in the competition. All participants must adhere to the U.S. Center for SafeSport Code, USEF Safe Sport Policy, and the Minor Athlete Abuse Prevention Policies. More information about these can be found at www.usef.org. Every class offered herein which is covered by the rules and specifications of the Current USEF Rule Book will be conducted and judged in accordance therewith.

EVERY CLASS OFFERED HEREIN WHICH IS COVERED BY THE RULES AND SPECIFICATIONS OF THE CURRENT USEF RULE BOOK WILL BE CONDUCTED AND JUDGED IN ACCORDANCE THEREWITH.

USEF MEMBERSHIP STATEMENT

Life, senior active and junior active members shall be eligible to participate in all classes at Regular Competitions, Eventing Competitions at the Modified Level or above and Combined Driving Competitions at the Advanced Level, Dressage, Reining and Vaulting Competitions and Endurance Rides. A non-member may participate as a handler, rider, driver, owner, lessee, or agent, at Regular Competitions, Eventing Competitions, Dressage Competitions, Reining Competitions and Combined Driving Competitions upon payment of a Show Pass fee. Participants in the following classes are exempted from the Requirements of this rule: 1) leadline; 2) exhibitions; 3) games and races; 4) classes for 4-H members; 5) walk trot (exception: Friesian performance FR231) and academy classes (academy classes are classes limited to horses used regularly in a lesson program); 6) USDF introductory level tests, pas de deux and quadrille classes; 7) NRHA Endorsed Reining Competitions. 8) Opportunity classes, 9) citizens of other nations who have proof, in English, of current membership in good standing of their own National Federation, 10) USEA beginner novice division; and 11) assistant handlers in Dressage Sport Horse Breeding classes

The Horse Show Committee reserves the right to interpret all questions and conditions in regard to or arising out of, or incident to the show without claims for damages or recourse of any kind. All questions not covered in these Rules and Regulations shall be decided by the Horse Show Management; its decision to be final.

The Horse Show Management reserves the right to limit entries in any class, section or division, to refuse, accept conditionally, or to cancel any entries, disqualify any riders or exhibitors, prohibit exhibition of entries, and cancel award prizes, without any claim for damages; to change any course, to add a dotted line, to cancel or combine any unfilled classes, or to reschedule classes, after due notice to exhibitors; to change rings or rotate judges; to change specifications in jumper classes as competition warrants. Every horse entered herein for competition will be under the control of the Horse Show Management, but the Show Management will in no case be responsible for any loss or damage that may occur, and it shall be a condition of entry that each exhibitor shall hold the horse show and the officials, employees, directors, officers, sponsoring entities of the horse show and the facilities at which the horse show is held blameless for any loss or accident to his horse(s), employee(s), or equipment which may occur from sickness, fire or other cause.

WARNING: THE Middleburg Classic & Piedmont Jumper Classic, IT'S MANAGEMENT, OFFICERS, OWNERS, OFFICIALS, AND EMPLOYEES WILL NOT BE RESPONSIBLE FOR ANY ACCIDENT OR LOSS WHICH MAY OCCUR TO AN EXHIBITOR, SPECTATOR, GUEST, RIDER, GROOM, ATTENDANT OR OTHER EMPLOYEE, ANIMAL, VEHICLE, EQUIPMENT, OR ANYONE WITH UNAUTHORIZED USE OF FACILITY AT THE SHOW AT THE SHOW.

THIS SHALL BE A CONDITION OF ENTRY TO THE SHOW OR SHOW GROUNDS.

Current USEF rules relating to drugs and medications will be enforced. Each horse entered must pay the \$15.00 USEF Drug Medication Fee plus an \$8.00 USEF fee. (Total \$23.00 USEF Fee). Each horse entered will also be required to pay the USHJA Fee of \$7.00.

While every effort has been made to avoid mistakes in this publication, the USEF, Salem Farm Showgrounds, Middleburg Classic & Piedmont Jumper Classic Horse Show, and its management and/ employees assume no liability to anyone for errors. Any significant errors or changes will be disclosed to competitors whose entries are accepted upon their acceptance, and otherwise in accordance with USEF rules.

Credentials: ALL EXHIBITORS IN ANY PONY, JUNIOR HUNTER OR AMATEUR SECTION MUST PRESENT THEIR CREDENTIALS (MEASUREMENT CARD OR AMATEUR CERTIFICATION) TO THE SHOW OFFICE BEFORE THEIR NUMBERS CAN BE RELEASED. Kindly send a photo copy of credentials with entry to facilitate processing. All horses or ponies without a valid measurement card will be measured at a designated time and place. Anyone not presenting valid membership credentials will be charged a non-refundable show pass fee (\$30 USHJA). Amateur exhibitors not able to present valid Amateur Credentials will be required to join the Federation. USEF Competing Members aged 18 or older must have successfully completed SafeSport training prior to competing.

Horse Registrations: All horses competing in Federation non-breed restricted licensed competitions with hunter, hunter breeding, jumper and hunter seat equitation classes (except those activities enumerated in GR901.9, items 1-9) must be properly identified and must obtain a Registration Number from USHJA. A registration number for each horse must be entered on all entry forms for licensed competitions. Proof of registration must be presented to the Show Secretary before numbers can be released. To be eligible for National, Regional or Zone Horse of the Year Awards, and to enter a USEF Computer Ranking List Class horses must also be registered with the USEF. All horses must have a valid microchip on file with USEF to be eligible to compete in any class.

Coggins Test: Virginia state law requires that each horse be accompanied by a negative EIA certificate dated within one year. Out of state horses should be accompanied by a health certificate. This requirement applies to every horse whether stabled, non-showing, or shipping in. Please bring a paper copy of all coggins.

EHV/Influence Vaccination: Per GR845 proof of vaccination for EHV and Equine Influenza within six months of the competition must also accompany each entry. This requirement applies to every horse whether stabled, non-showing, or shipping in.

Entries: All ENTRIES are to be made ONLINE. The closing date for entries will be September 2, 2023. A \$50 late fee will apply to all entries not submitted by the closing date.

Checks should be made payable to Middleburg Classic Horse Show. Numbers will not be issued without a signed open check or credit card lodged with the horse show secretary. A non-refundable \$75 Office Fee will be charged to all entries. Exhibitors shall be responsible for the entry fees of all horses entered by them or their agents even though the payment of those fees are not submitted with the entry fees. Entries not closed out by the completion of the horse show may be subject to a \$50 close out fee.

CHECK OUT

Any disputes found on your printed invoice must be resolved within 24 hours. Please review your bills carefully and note the correct prize money payee on your bill. If disputes are not negotiated within this time period, the invoice will stand. If you do not close out your invoice(s) by the end of the show, a \$50 fee may be assessed. Any open invoices left in the office after the end of the show will be closed out with the method of payment holding the entry.

RULES & REGULATIONS (cont'd.)

If there is not a method of payment connected to an account (check, working credit card, cash), the account will be added to the trainer's barn account for payment.

All credit cards will incur a 3.5% service convenience fee upon checkout. Entries must be made on the official 2023 show entry blank and include all required information including registration numbers, signatures, and prize payee information. All accounts must be settled in full at the show. A fee of \$50 or 10% whichever is greater will be charged for any returned checks. Unpaid entries will be forwarded to USEF per GR913.

All trainers must create a barn account if submitting online entries with valid credit card number. **That card will be charged for any fees not closed out by end of show.

Distribution of prize monies will be carried out in the show office only and will be credited to show fees owed after the class winnings are posted.

Balances of prize money will be issued as a check within 30 days of the show's conclusion.

Checks will be mailed to the address and person provided on the entry blank. For accounts that receive prize money checks post competition, all checks must be cashed within 60 days of issue.

Stalls: Temporary stalls with attached doors will be available for \$350 for each week (nonrefundable after close of entries on September 2, 2023). Stalls will be assigned on a first come first serve basis. Payment MADE OUT TO MIDDLEBURG CLASSIC or online with credit card in online entry must accompany stabling reservation form in order to secure stalls (separate open payment required for entries). Stalls for the Piedmont Jumper Classic will not be available for move in for new horses until Wednesday am unless previous arrangements have been made. The footing for the stalls will be on blue stone pad.

Please note: No stall fees, once processed, will be refunded after the close of entries September 2, 2023.

EQUINE & HUMAN SAFETY FEE: Each entry this year will pay a \$25.00 Equine & Human Safety fee.

The office processing fee is \$75 and is not refundable once processed.

Ship Ins: Horses not stabled on grounds will be permitted, a \$60 ship in fee will apply.

Non-Showing Horses: All non-showing horses must complete an entry blank, submit a valid Coggins, and EHV information. A \$100 fee will be assessed to any horse not entered in any classes.

Motor Homes: A limited number of motor homes and camper sites are available. Please include your camper reservation with your Online entry. Confirmation for a reserved spot will be official after we have received License plate information and make and model of camper. Please email this information to office@middleburgclassic.com. All camper spaces for both weeks are \$325.00 per week.

Rings: NOTE: All rings and warm up areas contain all weather footing
Salem Main: 240 x 310 - Synthetic & sand
Salem II: 180' x 240' - Synthetic & sand

SCRATCHES: After 9/2 no horse may be scratched without a vet certificate. If the entry fee is by division only, no money can be refunded after the start of the division.

STALL AND OFFICE PROCESSING FEES ARE NOT REFUNDABLE

Motorized Vehicles/Golf Carts: Under Virginia State Laws and USEF rules, unlicensed drivers are not permitted to operate any motorized vehicles — ATVs, motorcycles, golf carts, etc., on the show grounds. Failure to abide by these regulations will subject the exhibitor to suspension from the horse show. See USEF GR 301.

Minor Exhibitors: Parent(s) or guardian(s) of minor exhibitors shall hold the Horse Show Management and the Facility harmless for any injury to such minor. No child's entry will be accepted or number issued unless entry is signed by a parent or LEGAL guardian. The signature of unrelated persons WILL NOT be accepted. Minors who do not have a valid driver's license which allows them to operate a motorized vehicle in the state in which they reside will not be permitted to operate a motorized vehicle of any kind, including, but not limited to, golf carts, motorcycles, scooters, or farm utility vehicles, on the competition grounds of licensed competitions. Minors who have a valid temporary license may operate the above described motorized vehicles as long as they are accompanied by an adult with a valid driver's license. Minors who do not have a valid driver's license which allows them to operate a motorized vehicle in the state in which they reside will not be permitted to operate a motorized vehicle of any kind, including, but not limited to, golf carts, motorcycles, scooters, or farm utility vehicles, on the competition grounds of licensed competitions. Minors who have a valid temporary license may operate the above described motorized vehicles as long as they are accompanied by an adult with a valid driver's license. The parent/legal guardian

or individual who signs the entry blank as a parent or guardian of a minor operating a motorized vehicle in violation of this rule are solely responsible for any damages, claims, losses or actions resulting from that operation. Violations of this rule will be cause for penalties against those responsible for the child committing the offense. Wheelchairs and other mobility assistance devices for individuals with disabilities are exempt from this rule. The unsafe use of personal electronic transport devices, as determined by the competition officials and management in their sole discretion, that do not require a driver's license to operate, including but not limited to segways, hover boards, and single wheeled scooters

is prohibited on competition grounds. Operating such devices in areas where people gather may be deemed "unsafe use" if there is a risk of harm to others. If the operator of the device is a minor, the parent/legal guardian or individual who signs the entry blank as a parent or guardian of a minor operating the device in violation of this rule is accountable and may be subject to penalties. Wheelchairs and other mobility assistance devices for individuals with disabilities are exempt from this rule.

Protective Headgear: Protective head gear, properly secured, must be worn BY ALL RIDERS AT ALL TIMES WHILE MOUNTED, anywhere, anytime on the show grounds. Headgear for all riders must meet or exceed ASTM Standards; must carry the SEI tag; and be properly secured by a harness per USEF rules.

Sharps: Sharps containers will be provided at the barns. Management may fine exhibitors up to \$100 for improper disposal of needles or other sharp disposable instruments.

Dogs: Dogs are not permitted to be loose on competition grounds and must be on a leash or otherwise contained. Individuals must not lead dogs on a leash while mounted. Dog owners are solely responsible for any damages, claims, losses or actions resulting from their dogs' behaviors. Dog owners failing to comply with this rule may be subject to penalty under Chapters 6 and 7, as well as issuance of warning cards pursuant to rule GR301. Failure to maintain your dog, under control, as defined here, will result in a \$50 fine assessed to the owner. In addition, pursuant to facility regulations, loose dogs will be removed by animal control, from the show grounds, at the owner's expense and impounded.

Animal Welfare: Owners, trainers, riders and grooms, or their agents must use reasonable care in the handling and treatment of their horses whether owned or placed in their care for competition or for any other purpose. At all times, while the horse is on the show grounds, we will provide for the continuous well-being of the welfare of the horse. USEF rules defining policy regarding abuse horse by vigorously enforcing the rules of the USEF which pertain to the welfare of the horse. USEF rules defining policy regarding abuse and use of whips will be strictly

RULES & REGULATIONS (cont'd.)

enforced. No poling, use of bamboo off-set or excessive use of the whip will be tolerated. The well being of the horse must be considered above the demands of the breeders, trainers, riders, owners, dealers, organizers, sponsors or officials. Violators may be subject to penalties pursuant to USEF rules. In the event of an acute and serious injury to or illness of a horse on competition grounds when the owner or trainer of the horse or agent of the owner is not present, after reasonable effort to contact that individual has been made, competition management, in consultation with a licensed equine veterinarian, may authorize the provision of emergency veterinary treatment of the horse. If competition management so authorizes treatment under the provisions of this rule, competition management and veterinarian are not liable for any resulting costs, damages, losses, claims or actions arising directly or indirectly from the treatment of the horse.

Parking: Fire regulations prohibit all vehicles, including trailers, vans and passenger vehicles from being parked in the stable areas. Vans and trailers will be allowed in the stable area only to load or off-load. **PARKING AREAS WILL BE DESIGNATED AND VIOLATORS WILL BE TOWED AWAY AT OWNERS EXPENSE**

Photo Release: By signing the entry form I agree to waive the right to the use of my photos/videos at the competition and grant Middleburg Classic & Piedmont Jumper Classic and its agent's full use of any and all competition photos and video.

The ONLY entrance and exit into the showgrounds will be off of Willisville Rd. Willisville Rd intersects with John S Mosby Highway on the east end of the show grounds.

On Check In day, the office will be open from 8am-5pm. During show days the office will be open 45 minutes prior to first class and closed a half an hour after the conclusion of that day's show.

ALL ADDS must be in by 4pm the day before, either electronically or in the show office by 4pm.

We encourage show office business done via online whenever possible. Online entry is preferred and online add/scratch will be available from 10 am to 4pm each day of the horse show. ALL adds should be done no later than 4pm the day before. Management reserves the right to limit entries or close classes in the event that the day fills up to capacity.

All memberships with USEF, USHJA, amateur status, horse recordings and microchips should be current. PLEASE double check your status prior to entries and arrival. If any are out of date, we ask that you renew

online.

Feed & Bedding will be processed in the office this year and will be on exhibitors bills or barn account.

Covid 19 Both horse shows will be adhering to all CDC, Federal and State current regulations. At the time of the horse shows, we will follow USEF current policies and protocols.

Anyone currently exhibiting COVID-19 symptoms, who has tested positive or has been in contact with someone who has test positive for COVID-19 in the 14 days prior to arriving at the ground will NOT BE PERMITTED ON GROUNDS.

Anyone who becomes ill during the event will be directed to the appropriate local healthcare provider and will not be permitted back on the show grounds.

FACE MASKS & PPE

Per the USEF, please adhere to their latest published recommendations.

It is the trainer's responsibility to provide PPE to their own staff and to disinfect their own property (golf cart, hoses, etc) that another individual might come into contact with at the show.

Handwash and or disinfection stations will be available around the property. Individuals are encouraged to bring their own PPE and hand sanitizers for use when needed.

Communal property such as bathroom doors, spigots, water coolers, etc. will be disinfected regularly however we encourage you to wear your own PPE equipment and gloves for additional protection.

Social distancing of 6' apart should be observed everywhere on the show grounds. If any inclement weather occurs, exhibitors and other people should shelter in their vehicles and not crowd under a tent or in stalls.

When course walking is allowed, it will be monitored to provide social distancing to protect you and the others.

Mounting blocks will be at each ring.

All the staff at these horse shows will be working hard to keep the show and their areas safe and within the Covid-19 protocols. Please comply if one of the staff requests you to observe our rules.

Jogs

Per USEF in hand jogs are waived. For any over fences class requiring a jog, the rider will trot a circle on a loose rein after completing the course in the view of the judge.

DRIVING DIRECTIONS

From Winchester/I-81: Take exit 313A off of I-81 to US50E, follow US50E for approximately 22 miles, the show grounds are located on US50 one mile east of Upperville.

From Dulles Airport: Take VA28S to US50W. Follow US50W for approximately 30 miles, the show grounds are located on US50 one mile east of Upperville.

From Washington and National Airport: North via George Washington Memorial Parkway to Route 66W. Take Route 66 to US50W. Follow US50W for approximately 30 miles (through Middleburg). The show grounds are located on US50 one mile east of Upperville.

Nearest Trauma Center- Fairfax
Inova Trauma Center

3300 Gallows Road, Falls Church, VA 22042 (37.3 miles)

Nearest ER

Stone Springs Hospital Center

24440 Stone Springs Blvd, Dulles, VA 20166 (16.5 miles)

TENTATIVE TIME SCHEDULE



SEPTEMBER 26 - OCTOBER 1, 2023

MAIN HUNTER

TUESDAY - 9:00 AM

260,261 3' WARM-UP (Blue/Red)
263,264 3'3" WARM-UP (Blue/Red)
265,266 3'6" WARM-UP (Blue/Red)

WEDNESDAY - 7:30 AM

7 GREEN CONFORMATION MODEL
1 HIGH PERFORMANCE CONF MODEL
2,3 HIGH PERFORMANCE CONF O/F
6 HIGH PERFORMANCE CONF U/S
8,9 GREEN CONF O/F
12 GREEN CONF U/S
38,39 HIGH PERFORMANCE O/F
42 HIGH PERFORMANCE U/S
28,29(I) GREEN 3'9" O/F
32 GREEN 3'9" U/S
33,34(I) GREEN 3'6" O/F
404 \$1,000 USHJA GREEN INCENTIVE 3'6/3'9"
23,24(I) GREEN 3'3" O/F
403 \$1,000 USHJA GREEN INCENTIVE 3'3"
123,124 3'6" PERFORMANCE HUNTER O/F

THURSDAY - 8:00 AM

10,11(h) GREEN CONF O/F
4,5(h) HIGH PERFORMANCE CONF O/F
40,41(h) HIGH PERFORMANCE O/F
30,31 GREEN 3'9" O/F
35,36(h) GREEN 3'6" O/F
37 GREEN 3'6" U/S
25,26 GREEN 3'3" O/F
27 GREEN 3'3" U/S
125,126(h) 3'6" PERFORMANCE HUNTER O/F
127 3'6" PERFORMANCE HUNTER U/S

FRIDAY - 8:00 AM

15,16(h) 3'3" PERFORMANCE O/F
17 3'3" PERFORMANCE U/S
218,219 MIDDLEBURG JR/AM 3' O/F
220 MIDDLEBURG JR/AM U/S
401A \$5,000 MIDDLEBURG CLASSIC DERBY

SATURDAY - 8:00 AM

415 NEW - HACK OFF (PROCEEDS GO TO F&F)
500A \$10,000 USHJA INTERNATIONAL HUNTER DERBY
43,44(h) 3'3" AMATEUR OWNER 18-35 O/F
47 3'3" AMATEUR OWNER 18-35 U/S
48,49(h) 3'3" AMATEUR OWNER 36+ O/F
52 3'3" AMATEUR OWNER 36+ U/S
63,64(h) 3'6" AMATEUR OWNER 18-35 O/F
67 3'6" AMATEUR OWNER 18-35 U/S
68,69(h) 3'6" AMATEUR OWNER 36+ O/F
72 3'6" AMATEUR OWNER 36+ U/S
73,74(h) 3'6" SMALL JUNIOR 15 - O/F
77 SMALL JUNIOR 15 - U/S
78,79(h) 3'6" SMALL JUNIOR 16 - 17 O/F
82 SMALL JUNIOR 16 - 17 U/S
83,84(h) 3'6" LARGE JUNIOR 15 - O/F
87 LARGE JUNIOR 15 - U/S
88,89(h) 3'6" LARGE JUNIOR 16-17 - O/F
92 LARGE JUNIOR 16 - 17 U/S

SUNDAY - 8:00 AM

45,46* 3'3" AMATEUR OWNER 18-35 O/F
50,51* 3'3" AMATEUR OWNER 36+ O/F
65,66* 3'6" AMATEUR OWNER 18-35 O/F
70,71* 3'6" AMATEUR OWNER 36+ O/F
405 \$1,000 3'3"/3'6" AMATEUR OWNER CLASSIC
90,91* 3'6" LARGE JUNIOR 16-17 O/F
85,86* 3'6" LARGE JUNIOR 15 - O/F
80,81* 3'6" SMALL JUNIOR 16-17 O/F
75,76* 3'6" SMALL JUNIOR 15 - O/F
407 \$1,000 3'6" JUNIOR CLASSIC

SALEM 2 RING

TUESDAY - 10:00 AM

TICKETED SCHOOLING.
Arena open for sarm ups from 10:00-4:00

WEDNESDAY - 8:00 AM

262 3' WARM-UP (Blue/Red)
18,19(I) GREEN 3' O/F
402 \$1,000 USHJA GREEN INCENTIVE 3'
22 GREEN 3' U/S
206,207 MIDDLEBURG HUNTER 3' O/F
210 MIDDLEBURG HUNTER 3' O/F
191,192* TAKE2 THOROUGHBRED 3' O/F
193 TAKE2 THOROUGHBRED 3' U/S
412 \$500 TAKE2 THOROUGHBRED CLASSIC

THURSDAY - 8:00 AM

241,242 BABY GREEN 2'9" O/F
249,250 5 YEAR OLD & UNDER 2'9" O/F
20,21 GREEN 3' O/F
208,209 MIDDLEBURG HUNTER 3' O/F
216,217 MIDDLEBURG JR/AM 3' O/F
13,14 3'3" PERFORMANCE O/F

FRIDAY - 8:00 AM

251,252 5 YEAR OLD & UNDER 2'9" O/F
253 5 YEAR OLD & UNDER U/S
223,224 LOCAL PROFESSIONAL 2'9" O/F
225 LOCAL PROFESSIONAL 2'9" U/S
228,229 LOCAL JR/AM 2'9" O/F
230 LOCAL JR/AM 2'9" U/S

SATURDAY - 8:30 AM

53,54(h) 3'3" JUNIOR 15 - O/F
57 3'3" JUNIOR 15 - U/S
58,59(h) 3'3" JUNIOR 16-17 - O/F
62 3'3" JUNIOR 16-17 - U/S
166,167* ADULT 50+ O/F
170 ADULT 50+ U/S
161,162* ADULT 36-49 O/F
165 ADULT 36-49 U/S
156,157* ADULT 18-35 O/F
160 ADULT 18-35 U/S

SUNDAY - 8:00 AM

168,169 ADULT 50+ O/F
163,164 ADULT 36-49 O/F
158,159 ADULT 18-35 O/F
409 \$1,000 NAL/WIHS ADULT CLASSIC
60,61* 3'3" JUNIOR 16-17 O/F
55,56* 3'3" JUNIOR 15 - O/F
406 \$1,000 3'3" JUNIOR CLASSIC

(I) Incentive Round (H) Handy
*First Round Classic (C) Conformation
**All rings will be open for flatwork ONLY
until one hour before start time.**

SALEM 3 RING

TUESDAY - 10:00 AM

TICKETED SCHOOLING.
Arena open for sarm ups from 10:00-4:00

WEDNESDAY 8:00 AM

267 2'6" WARM-UP (Blue/Red)
239,240 BABY GREEN 2'6" O/F
201,202 MIDDLEBURG HUNTER 2'6" O/F
243 BABY GREEN 2'6" U/S
205 MIDDLEBURG HUNTER 2'6" U/S
239,240 BABY GREEN 2'9" O/F
243 BABY GREEN 2'9" U/S
151,152 SMALL HUNTER 3' O/F
153 SMALL HUNTER 3' U/S

THURSDAY 8:00 AM

241,242 BABY GREEN 2'6" O/F
203,204 MIDDLEBURG HUNTER 2'6" O/F
211,212 MIDDLEBURG JR/AM 2'6" O/F
221,222 LOCAL PROFESSIONAL 2'9" O/F
226,227 LOCAL JR/AM 2'9" O/F

FRIDAY 8:00 AM

213,214 MIDDLEBURG JR/AM 2'6" O/F
215 MIDDLEBURG JR/AM 2'6" U/S
234,235 LOCAL LG PONY 2'6" HTR
236 LOCAL LARGE PONY HTR U/S
231,232 LOCAL SM/MED PONY 2' HTR
233 LOCAL SM/MED PONY HTR U/S
181,182* SMALL/MEDIUM CHILD PONY 2' O/F
185 SMALL/MEDIUM CHILD PONY 2' U/S
186,187* LARGE CHILD PONY 2'6" O/F
190 LARGE CHILD PONY 2'6" U/S

SATURDAY 8:30 AM

183,184 SMALL/MEDIUM CHILD PONY 2' O/F
188,189 LARGE CHILD PONY 2'6" O/F
413 CHILD PONY HUNTER CLASSIC 2'6"/2'
94(c),95* SMALL PONY 2'3" O/F
98 SMALL PONY 2'3" U/S
112(c),113 SMALL/MEDIUM GREEN PONY 2'3"/2'6" O/F
116 SMALL/MEDIUM GREEN PONY 2'3"/2'6" U/S
100(c),101* MEDIUM PONY 2'6" O/F
104 MEDIUM PONY 2'6" U/S
118(c),119 LARGE GREEN PONY 2'9" O/F
122 LARGE GREEN PONY 2'9" U/S
106(c),107* LARGE PONY 3' O/F
110 LARGE PONY 3' U/S
171,172* CHILDREN'S HUNTER 14 - O/F
175 CHILDREN'S HUNTER 14 - U/S
176,177* CHILDREN'S HUNTER 15 - 17 O/F
180 CHILDREN'S HUNTER 15-17 - U/S

SUNDAY 8:00 AM

173,174 CHILDREN'S HUNTER 14 - O/F
178,179 CHILDREN'S HUNTER 15 - 17 O/F
410 \$1,000 NAL/WIHS CHILDREN'S CLASSIC
108,109 LARGE PONY 3' O/F
102,103(h) MEDIUM PONY 2'6" O/F
96,97(h) SMALL PONY 2'3" O/F
411 \$500 PONY CLASSIC
114,115 SMALL/MEDIUM GREEN PONY 2'3"/2'6" O/F
120,121 LARGE GREEN PONY 2'9" O/F

Class entries and ring status available at horseshowsonline.com

Entries: three entries are required to fill a performance class unless otherwise specified. Classes will be combined or split in accordance with current USEF rules.

Ribbons: 1-8 unless otherwise specified.

Championships: Hunter championship and reserve champion will be awarded to 2 of the top 4 horses receiving the most points over fences. Only these 4 horses will receive full points in under saddle classes. Half points in model classes.

DIVISION	CLASS NUMBERS	ENTRY FEE	PRIZE MONEY
Conformation Model	1 (HP), 7 (green)	\$50/class	Ribbons
\$1,000 High Performance Conformation	2,3,4,5 (H),6	\$300/division	\$70 , \$50 , \$35 , \$20 , \$15 , \$10
\$1,000 Green Conformation	8, 9, 10, 11(H), 12	\$300/division	\$70 , \$50 , \$35 , \$20 , \$15 , \$10
\$600 3'3" Performance	13, 14(H), 15, 16, 17	\$75/class, \$300/div	\$70 , \$50 , \$35 , \$20 , \$15 , \$10
\$600 3'6" Performance	123, 124(H), 127	\$75/class, \$300/div	\$70 , \$50 , \$35 , \$20 , \$15 , \$10
\$1,000 Green 3'	18, 19(I), 20, 21, 22	\$250/division	\$70 , \$50 , \$35 , \$20 , \$15 , \$10
\$1,000 Green 3'3"	23, 24(I), 25, 26, 27 28	\$250/division	\$70 , \$50 , \$35 , \$20 , \$15 , \$10
\$1,000 Green 3'6"	29(I), 30, 31(H), 32, 33	\$250/division	\$70 , \$50 , \$35 , \$20 , \$15 , \$10
\$1,000 Green 3'9"	34(I), 35, 36(H), 37	\$250/division	\$70 , \$50 , \$35 , \$20 , \$15 , \$10
\$1,625 High Performance	38, 39, 40, 41(H), 42	\$100/class, \$300/div	\$100 , \$75, \$50 , \$45, \$30 , \$25
\$1,500 3'3" Amateur Owner 18-35	43, 44(H) 45, 46*, 47	\$275/division	\$90 , \$70 , \$45, \$40 , \$30 , \$25
\$1,500 3'3" Amateur Owner 36+	48, 49(H), 50*, 52	\$275/division	\$90 , \$70 , \$45, \$40 , \$30 , \$25
\$1,500 3'3" Junior 15-	53 ,54(H), 55, 56*, 57	\$275/division	\$90 , \$70 , \$45, \$40 , \$30 , \$25
\$1,500 3'3" Junior 16-17	58, 59(H), 60, 61*, 62	\$275/division	\$90 , \$70 , \$45, \$40 , \$30 , \$25
\$1,500 3'6" Amateur Owner 18-35	63, 64(H), 65, 66*, 67	\$275/division	\$90 , \$70 , \$45, \$40 , \$30 , \$25
\$1,500 3'6" Amateur Owner 36+	68, 69(H), 70 , 71*, 72	\$275/division	\$90 , \$70 , \$45, \$40 , \$30 , \$25
\$1,500 3'6" Small Junior 15-	73, 74(H) 75, 76*, 77	\$275/division	\$90 , \$70 , \$45, \$40 , \$30 , \$25
\$1,500 3'6" Small Junior 16-17	78, 79(H), 80, 81*, 82	\$275/division	\$90 , \$70 , \$45, \$40 , \$30 , \$25
\$1,500 3'6" Large Junior 15-	83, 84(H), 85, 86*, 87	\$275/division	\$90 , \$70 , \$45, \$40 , \$30 , \$25
\$1,500 3'6" Large Junior 16-17	88, 89(H), 90, 91 * , 92	\$275/division	\$90 , \$70 , \$45, \$40 , \$30 , \$25
\$1,000 Small Pony	94(C), 95*, 96, 97(H), 98	\$250/division	\$70 , \$50 , \$30 , \$25, \$15, \$10
\$1,000 Medium Pony	100(C), 101*, 102, 103 (H), 104	\$250/division	\$70 , \$50 , \$30 , \$25, \$15, \$10
\$1,000 Large Pony	106(C), 107*, 108, 109(H), 110	\$250/division	\$70 , \$50 , \$30 , \$25, \$15, \$10
\$750 Small/Medium Green Pony	112(C), 113, 114, 115, 116	\$250/division	\$45, \$35 , \$25, \$20 , \$15, \$10
\$750 Large Green Pony	118 (C), 119, 120, 121, 122	\$250/division	\$45, \$35 , \$25, \$20 , \$15, \$10

(H) - Handy • (I) - Incentive Round • (C) Conformation • *1st Round Classic • Last class number -Under Saddle

DIVISION	CLASS NUMBERS	ENTRY FEE
Small 3'	151,152, 153	\$55/class or \$150 division
Adult Amateur 18-35 3'	156,157*, 158, 159	\$55/class or \$175 division
Adult Amateur 36-49 3'	160, 161, 162*, 163, 164, 165	\$55/class or \$175 division
Adult Amateur 50+ 3'	166, 167*, 168, 169, 170	\$55/class or \$175 division
Children's 14- 3'	171, 172*, 173, 174, 175	\$55/class or \$175 division
Children's 15-17 3'	176, 177*, 178, 179, 180	\$55/class or \$175 division
Small/Medium Children's Pony 2'	181, 182*, 183, 184, 185	\$55/class or \$175 division
Large Children's Pony 2'6"	186, 187*, 188, 189, 190	\$55/class or \$175 division
Take2 Thoroughbred 3'	191, 192*, 193	\$55/class or \$150 division

* 1st Round Classic • Last class number - Under Saddle

DIVISION	CLASS NUMBERS	ENTRY FEE
Middleburg 2'6"	201, 202, 203, 204, 205	\$50/class or \$175 division
Middleburg 3'	206, 207, 208, 209, 210	\$50/class or \$175 division
Middleburg Junior Amateur 2'6"	211, 212, 213, 214, 215	\$50/class or \$175 division
Middleburg Junior Amateur 3'	216, 217, 218, 219, 220	\$50/class or \$175 division
Local Professional 2'9"	221, 222, 223, 224, 225	\$50/class or \$175 division
Local Junior Amateur 2'9"	226, 227, 228, 229, 230	\$50/class or \$175 division
Local Pony 2'	231, 232, 233	\$50/class or \$125 division
Local Pony 2'6"	234, 235, 236	\$50/class or \$125 division
Baby Green 2'6"	239, 240, 241, 242, 243	\$50/class or \$150 division
Baby Green 2'9"	244, 245, 246, 247, 248	\$50/class or \$150 division
5 Year Old	249, 250, 251, 252, 253	\$50/class or \$150 division
2'9" Blue/Red	267	\$50/class
3' Blue/Red	260, 261, 262	\$50/class
3'3" Blue/Red	263, 264	\$50/class
3'6" Blue/ Red	265, 266	\$50/class

Last class number - Under Saddle

- Middleburg Hunter Sections open to all horses or ponies.
- Local Hunter Sections open to horses or ponies owned by residents of counties within a 75 mile radius or stabled within a 75 mile radius of Upperville, VA.
- Baby Green Hunter restricted to horses in their first year of showing at A Rated shows. No cross entry into divisions higher than 3'.

To be judged on performance, soundness, suitability and manners. To be scored under the open numerical judging system. Competitors in the Classic will receive a score for the designated first round classic class. Top 12 to return to jump a second round over a different course. Each round will count 50%. Horses/ponies must

have competed in the respective division to be eligible for the classic. Horse/pony MUST be entered in the classic prior to being judged in the designated first round classic class. No scratches permitted once the first round class has begun.
Ribbons 1-12

CLASS	CLASS NUMBERS	ENTRY FEE	PRIZE MONEY
\$10,000 USHJA International Derby <i>See ushja.org for current rules.</i>	500A	\$500+\$50 USHJA fee	\$3000, \$2200, \$1300, \$800, \$600, \$500, \$400, \$300, \$300, \$200, \$200, \$200
\$5,000 Middleburg Classic Derby <i>Class specifications posted in show office.</i>	401A	\$300	\$1,500, \$1,100, \$650, \$400, \$300, \$250, \$200 \$150, \$150, \$100, \$100, \$100
\$1,000 USHJA Green Incentive 3'	402	\$150 +\$20	\$300, \$220, \$130, \$80, \$60, \$50, \$40, \$30, \$30,
\$1,000 USHJA Green Incentive 3'3"	403	\$150 +\$20 USHJA fee	USHJA fee \$20, \$20, \$20
\$1,000 USHJA Green Incentive 3'6"/3'9" <i>See ushja.org for current rules.</i>	404	\$150 +\$20 USHJA fee	\$300, \$220, \$130, \$80, \$60, \$50, \$40, \$30, \$30, \$20, \$20, \$20
\$1,000 3'3"/3'6" Amateur Owner Classic	405	\$150	\$300, \$220, \$150, \$100, \$80, \$60, \$50, \$40
\$1,000 3'3" Junior Classic	406	\$150	\$300, \$220, \$150, \$100, \$80, \$60, \$50, \$40
\$1,000 3'6" Junior Classic	407	\$150	\$300, \$220, \$150, \$100, \$80, \$60, \$50, \$40
\$1,000 NAL/WIHS Adult Amateur Classic	408	\$150	\$300, \$220, \$150, \$100, \$80, \$60, \$50, \$40
\$1,000 NAL/WIHS Children's Classic	409	\$150	\$300, \$220, \$150, \$100, \$80, \$60, \$50, \$40
\$500 Pony Classic	410	\$100	\$300, \$220, \$150, \$100, \$80, \$60, \$50, \$40
\$500 Take2 Thoroughbred Classic	411	\$100	\$150, \$110, \$75, \$50, \$40, \$30, \$25, \$20
Children's Pony Classic	412	\$100	\$150, \$110, \$75, \$50, \$40, \$30, \$25, \$20
Hack Off	413	\$50	



Join us outside the Salem Main Ring at the conclusion of each division to congratulate our champions and reserves.

WEDNESDAY MAIN RING

George Sayo Memorial Trophy

Donated by Delores Swann
Green Conformation Model
2020 Not Awarded
2021 Necofino – Rein Family LLC

THURSDAY MAIN RING

Forest Farm Perpetual Trophy

Donated by Forest Farm - Ted Hardman & Duane Ruth
Green Conformation Champion
2020 Not Awarded
2021 Genuine – Peg Seals

Robert J Burke Trophy

Donated by Mrs. Robert J Burke
High Performance Conformation Champion
2020 Not Awarded
2021 Not Awarded

Sallie Sexton Memorial Challenge Trophy

Donated by her family
Best Trip Green or High Performance
Conformation Handy
2020 Not Awarded
2021 Not Awarded

Blind Faith Perpetual Trophy

Donated by Boots Parker in Memory of Allen Smith
High Performance Champion
2020 Kygo – Wendy Peralta
2021 Lafitte de Muze – Cheryl Olsten

Green 3'9" Championship Trophy

Donated by Teresa & Greg Ramsay
Green 3'9" Champion
2019 Not Awarded
2021 Cartel – Jeffrey Ayers

Mt Harmony Farm Perpetual Trophy

Donated by Mr. & Mrs. Phillip Duke
Green 3'6" Champion
2020 Not Awarded
2021 Babylon – Marnell Sport Horses

George Sayo Perpetual Trophy

Donated by Scott Williamson
Best Trip Green 3'6" or 3'9" Handy
2020 Kygo - Wendy Peralta
2021 Not Awarded

Lee McGehee Memorial Trophy

Donated by Helen Smyth & Bob Crandall
Grand Champion Green 3'6" or 3'9"
2020 Kygo - Wendy Peralta
2021 Babylon – Marnell Sport Horses

Waldenbrook Farm Trophy

Donated by John French
Green 3'3" Champion
2020 Unprecedented - Shadowfax Equestrian LLC
2021 Jordan – Margot Peroni

Donna Callar Memorial Trophy

Donated in loving memory by her friends & family
Green 3' Champion
2020 Memphis Blue - Martin Schlaeppi
2021 Arosa B – Jacqueline Kramia

Steve Timko Memorial Perpetual Trophy

Donated by his friends
Groom of the Grand Champion Professional
2020 Not Awarded
2021 Not Awarded

THURSDAY RING II

Mindy Minetto Memorial Trophy

Donated by the Middleburg Classic
Grand Champion Middleburg
2020 Diazo - Lynn Rice
Voila - Lysa Burke Hutton
Samba - Mish Atamian
2021 Madison – Susannah Gerhardt

Hailstone Memorial Trophy

Donated by Ruth Evans & Tom Finch
Grand Champion Middleburg Jr/Amateur
2020 Luigi, Victoria Flagg LLC
2021 Madison – Susannah Gerhardt

FRIDAY MAIN RING

Martha Sifton Memorial Trophy

Donated by Winter Hill Farm
Performance 3'3" Champion
2020 Captivate - Maher Family LLC
Checkmate - Samantha Schaefer
2021 Babylon – Marnell Sport Horses

Claire Bedwell Mawdsley Trophy

Donated by the Mawdsley Family & friends of Claire
Performance 3'6" Champion
2020 - High Society - Alexa Elle Lignelli
2021 - Radio City – Hampton Green Farm LLC

Joey Darby Memorial Trophy

Donated by the Middleburg Classic
Winner of the Middleburg Classic Derby
2020 Checkmate - Samantha Schefer
2021 Doctor's Orders – Brad Wolf

Whit Lineweaver Trophy

Donated by his many friends
Groom of the Winner of the Middleburg Classic Derby
2020 Not Awarded
2021 Aurelio Elizondo

Mrs. Stephen C Clark, Jr Memorial Trophy

Donated by the Middleburg Classic
High Score Round One - Middleburg Classic Derby
2020 Fair N Square - Stefanie Gordinier
2021 Doctor's Orders – Brad Wolf

Saint Nick Memorial Trophy

Donated by Caroline Moran
High Score 3'6" A/O – Middleburg Classic Derby
2020 Sutton Place – Madeline Schaefer
2021 Upcountry Pisani – Madison Busey

Elizabeth Busch Burke Memorial Trophy

Donated by the Middleburg Classic
High Score 3'3" A/O - Middleburg Classic Derby
2020 Carma – Virginia Fout
2021 Not Awarded

Stanley Garrott Memorial Trophy

Donated by Phillip Matthews & Pinky Hipp
High Score Adult Amateur - Middleburg Classic Derby
2020 Kingsland - Ann Garnett Wheeler
2021 Not Awarded

Incentive Challenge Trophy

Donated by the Smith Family & WinDance Farm in memory of Jimmy Piehler
Best Trip Adult or A/O – Middleburg Classic Derby
2020 Sutton Place - Madeline Schaefer
2021 Rocketeer – Lindsey Welsh

Raven Perpetual Trophy

Donated by Nancy Parker
High Score Children's – Middleburg Classic Derby
2020 Not Awarded
2021 Samantha Karp

The Friends Memorial Sportsmanship Trophy

Donated by Meredith McLaughlin
Awarded to the person(s) best exemplifying
sportsmanship
2020 Maria Shannon
2021 Lynn Rice

FRIDAY RING II

Iceman Perpetual Trophy

Donated by Diane Wade
Local Professional Champion
2020 Brigadier - The Barracks
2021 Commander – Gia Bognet

Stonebrook Challenge Trophy

Donated by Ruth Douglas
Rider of the Local Professional Champion

2020 Brigadier - The Barracks
Unanimous - Maher Family
2021 Commander – Katie Huber

Coach Stop Trophy

Donated by the Coach Stop Restaurant
Local Jr/Amateur Champion
2020 Sin City - Susannah Gerhardt
Worth Quoting - Virginia Costa
2021 Trust – Jane Gaston

Sam Higden Memorial Trophy

Donated by Karen & Ali Zarabi
Rider of the Local Jr/Amateur Champion
2020 - Virginia Costa
Hilary Gerhardt
2021 Jane Gaston

Waterford Farm Trophy

Donated by Guy Ross & John Evans
Grand Champion Local
2020 GF Aurelia - Tessa Brandon
2021 EMC Valentijn – The Lignelli Family

Hillcrest Farm Local Pony Trophy

Donated by Pam Baker
Local Pony Champion
2020 GF Aurelia - Tessa Brandon
2021 EMC Valentijn – The Lignelli Family

Vanity Fair Cup

Donated by the Middleburg Classic
Grand Champion Children's Pony
2020 GF Aurelia - Tessa Brandon
2021 So Charming – Sprucedale INC

SATURDAY MAIN RING

Clyde Barrow Trophy

Donated by Bridget Hallman
Best Mover of the Amateur Owner Hunters
2020 Carma - Virginia Fout
2021 Not Awarded

Makoto Trophy

Donated by Makoto Farm
Best Mover of the Junior Hunters
2020 Snippet - Shadowfax Equestrian LLC
2021 Not Awarded

SATURDAY RING II

Paul Cira Perpetual Trophy

Donated by Jack Schock
Adult Amateur 18-35 Champion
2020 Luigi - Victoria Flagg LLC
2021 Crush – Glenwillow INC

Milo Perpetual Trophy

Donated by Lissa Brazzel
Adult Amateur 36-49 Champion
2020 Flirtation Walk - Quiet Haven Farm
2021 Meeko – Jillian Fellows Dill

Motown Trophy

Donated by Karen Long Dwight
Adult Amateur 50 & Over Champion
2020 String of Pearls - Priscilla Denegre
2021 Casander – Roberta Previ

Billy England Trophy

Donated by his friends
Grand Champion Adult Amateur
2020 String of Pearls - Priscilla Denegre
2021 Casander – Roberta Previ

Mark E Melendy Memorial Perpetual Trophy

Donated by his friends
Rider of the Grand Champion Adult Amateur
2020 Priscilla Denegre
2021 Roberta Previ

Diane Wade Memorial Trophy

Donated by her friends
High Point Owner-Rider Adult Amateur
2020 Not Awarded
2021 Roberta Previ

Woodsman Perpetual Trophy

Donated by Alex Johnson
Best Trip Adult Amateur Classic
2020 Not Awarded
2021 Catch Phrase – Gochman Ventures LLC

SUNDAY MAIN RING

Bruce Duchossois Memorial Trophy

Donated by the Middleburg Classic
3'3" Amateur Owner 36 & Over Champion
2020 Carma - Virginia Fout
2021 Aristocrat – John and Stephanie Ingram, LLC

Jack Schock Memorial Trophy

Donated by the Middleburg Classic
Grand Champion 3'3" Amateur Owner
2020 Carma - Virginia Fout
2021 Aristocrat – John and Stephanie Ingram, LLC

Grey Slipper Trophy

Donated by Bridget Hallman
3'6" Amateur Owner 18-35 Champion
2020 Sutton Place - Madeline Schaefer
2021 Herodios V – Caroline Kellogg

Coppertone Trophy

Donated by Mrs. Stephen Clark
3'6" Amateur Owner 36 & Over Champion
2020 Cikito - Grace Frulla
2021 Rafiki – Lee Kellogg Sadrian

Snicklefritz Trophy

Donated by Mrs. R.J Reynolds, III
Grand Champion 3'6" Amateur Owner
2020 Carma - Virginia Fout
2021 Herodios V – Caroline Kellogg

Blue Canyon Perpetual Trophy

Donated by the Gottwald Family
3'6" Small Junior 15 & Under Champion
2019 Cikito - Grace Frulla
2020 Miller's Cove - Balmoral

Black Mail Perpetual Trophy

Donated by Elizabeth Roberts
3'6" Small Junior 16-17 Champion
2018 Not Awarded
2019 Cikito - Grace Frulla

Small Junior Hunter Grand Champion Trophy

Donated by the Joseph Prendergast Family
Grand Champion 3'6" Small Junior
2020 Miller's Cove - Balmoral
2021 Guggenheim – The Lignelli Family

Peregrine Perpetual Trophy

Donated by the Robert G Norton Family
3'6" Large Junior 15 & Under Champion
2020 Not Awarded
2021 Small Occasion – Shadowfax Equestrian LLC

SUNDAY MAIN RING (CONT'D.)

Anastasia B Perpetual Trophy

Donated by the Gottwald
3'6" Large Junior 16-17 Champion
2020 Snippet - Shadowfax Equestrian LLC
2021 Not Awarded

Center City Memorial Trophy

Donated by Alexandra Listrani
Best Trip 3'6" Junior Handy
2020 Miller's Cove - Balmoral
2021 Small Occasion – Shadowfax Equestrian LLC

Wyatt Stewart Family Perpetual Trophy

Donated by Mr. & Mrs. Wyatt Stewart
Grand Champion 3'6" Large Junior
2020 Snippet - Shadowfax Equestrian LLC
2021 Small Occasion – Shadowfax Equestrian LLC

Grand Champion Junior Hunter Trophy

Donated by Carol Simon
Grand Champion Junior
2020 Cikito - Grace Frulla
2021 Small Occasion – Shadowfax Equestrian LLC

William T Russell Perpetual Trophy

Donated by The Tack Box

Best Trip Junior Hunter Classic
2020 Miller's Cove - Balmoral
2021 Casino Cash – Marnell Sport Horses

Small Town Perpetual Trophy

Donated by The Makoto Farm
Best Child Rider on a Junior Hunter
2020 Alexa Elle Lignelli
2021 Not Awarded

SUNDAY RING II

Trackside Challenge Trophy

Donated by Carol Holden
Children's 14 & Under Champion
2020 Tallyman - Maher Family
2021 Cat Bird – Glade Run Farm LLC

Cinnamon Oaks Trophy

Donated by Kathy Fillmore
Children's 15-17 Champion
2020 Barclesby - American Heritage Family Farm
2021 Fair N' Square – Caroline Hoover

The Barracks Perpetual Trophy

Donated by Mr. & Mrs. Thomas Bishop
Grand Champion Children's
2020 Barclesby - American Heritage Family Farm
2021 Catbird – Glade Run Farm LLC

Hugh Cassidy Memorial Trophy

Donated by Liz Jennings
Large Pony Champion
2020 Valentino - Ava Berman
2021 Good Times – The Lignelli Family

Hillcrest Farm Medium Pony Trophy

Donated by Mr. & Mrs. Wayne Baker
Medium Pony Champion
2020 EMC Entourage - The Lignelli Family
2021 Astro Boy – Robin Greenwood

Tuscon Susie Trophy

Donated by Betty & Lisa Long
Small Pony Champion
2020 Iparty - The Lignelli Family
2021 So Charming – Sprucedale INC

Whit Lineweaver Memorial

Perpetual Trophy
Donated by his many friends
Best Trip Regular Pony Handy
2020 Hidden Springs Waltz - Renaud Farm
2021 Swan Song – Ella Tarumianz

Skyland Farm Trophy

Donated by Denice DeRisio Perry
Grand Champion Pony
2020 Party - The Lignelli Family
2021 So Charming – Sprucedale INC

Strike It Rich Perpetual Trophy

Donated by Kennedy Anne Prentiss & North Cliff Farm
Rider of the Grand Champion Pony
2020 Agatha Lignelli
2021 Ella Tarumianz

Susan Crawford Edwards Perpetual Trophy

Donated by Ginny Edwards
Trainer of the Grand Champion Pony
2020 Evan Coluccio
2021 Stacy Weiss

Best Child Rider on a Pony

Donated by California Friends of the Middleburg Classic
Best Child Rider on a Pony
2020 Not Awarded
2021 Not Awarded

Best Tack Stall Award

Donated by Lee Cross Jewelers
Awarded to the barn with the best tack stall
2020 Not Awarded
2021 John & Y Stephanie Ingram LLC



We strive to provide a pleasant experience for all our exhibitors. In an effort to attain reasonable end times to the days and streamline the changeover process between Middleburg and Piedmont, we ask for cooperation with the following policies:

- **Entries will be accepted on a first come first serve basis and ONLINE only.**
- **New for 2023** – Each horse can only be entered into a maximum of 2 divisions on initial entry. Once we have accepted the entry and upon check in at the show, further adds or changes will be allowed at that time based on available ring counts and times.
- If entries are closed a notice will be posted on showgroundslive.com. If entries are closed substitutions may be permitted but no new entries will be accepted. **NO EXCEPTIONS.**
- In an effort to make sure the schedule run efficiently, scratches must be submitted by 4 pm, the day prior to the class.
- Ship ins are permitted however no new ship in entries will be permitted if entries are closed.
- Trip counts will be closely monitored to ensure a timely finish to the day; classes may be closed for new entries as rings get full.
- Live ring status displaying each ring's progress will be available throughout the show via showgroundslive.com.
- Stabling forms must be submitted and online entries. Prepayment for all stalls is required to be considered reserved. Special stabling requests will be honored if possible but are not guaranteed.
- Adjustments to stall reservations should be submitted prior to the closing date (September 2nd). Additional stalls requested after the closing date will only be granted if available and may not be next to the main block.

Special notes with regard to the Middleburg Classic:

- Regular show office hours begin on Tuesday, September 19th at 8am.
- TICKETED WARMUPS (\$30/round) will be offered Tuesday, September 19th in hunter rings 2&3. Exhibitors are requested to wear their back numbers. All rings open 9am-4pm.
- Layover stalls available during Piedmont Jumper Classic. Please call 727-417-6052 or email office@middleburgclassic.com for additional details and to make reservations.

**Please see current zone 3 specs at
<https://www.ushja.org/zones-affiliates/zone-3/specifications>**

Thank you for your assistance in making 2023 a pleasant and successful year!

**MIDDLEBURG
• CLASSIC •
September 20-24, 2023 Closing
Date: September 4, 2023**

Entry #	<p>MAIL CHECKS TO: MIDDLEBURG CLASSIC PO Box 601, Upperville, VA 20185 office@middleburgclassic.com 415-359-5455 Entries accepted online: showgroundslive.com</p>					
NAME OF HORSE	USEF/USHJA #	BREED	COLOR	SEX	DOB	HEIGHT
NAME OF RIDER	USEF/USHJA #	SECTIONS/CLASSES		DOB	US CITIZEN	
1st Rider					Y <input type="checkbox"/> N <input type="checkbox"/>	
2nd Rider					Y <input type="checkbox"/> N <input type="checkbox"/>	
<p>FEDERATION ENTRY AGREEMENT By entering a Federation-licensed Competition and signing this entry, blank as the Owner, Lessee, Trainer, Manager, Agent, Coach, Driver, Rider, Handler, Vaultor or Longeur, and on behalf of myself and my principals, representatives, employees and agents, I agree that I am subject to the Bylaws and Rules of The United States Equestrian Federation, Inc. (the "Federation") and the local rules of the Loudoun Benefit ("Competition"), I agree to be bound by the Bylaws and Rules of the Federation and of the competition. I will accept as final the decision of the Hearing Committee on any question arising under the Rules, and agree to release and hold harmless the competition, the Federation, their officials, directors and employees for any action taken under the Rules. I represent that I am eligible to enter and/or participate under the Rules, and every horse I am entering is eligible as entered. I also agree that as a condition of and in consideration of acceptance to enter, the Federation and/or the Competition may use or assign photographs, videos, audios, cable-casts, broadcasts, internet, film, new media or other likenesses of me and my horse taken during the course of the competition for the promotion, coverage or benefit of the Federation. Those likenesses shall not be used to advertise a product and they may not be used in such a way as to jeopardize amateur status. I hereby expressly and irrevocably waive and release any rights in connection with such use, including any claim to compensation, invasion of privacy, right of publicity, or to misappropriation. The construction and application of Federation rules are governed by the laws of the State of New York, and any action instituted against the Federation must be filed in New York State. See GR908.4.</p> <p>Federation Release, Assumption of Risk, Waiver, and Indemnification This document waives, important legal rights. Read it carefully before signing. I AGREE in consideration for my participation in this Competition to the following: I AGREE that the "Federation" and "Competition" as used herein includes the Licensee and Competition Management, as well as all of their officials, officers, directors, employees, agents, personnel, volunteers and Federation affiliates. I AGREE that I choose to participate voluntarily in the Competition with my horse, as a rider, driver, handler, vaultor, longeur, lessee, owner, agent, coach, trainer, or as parent or guardian of a junior exhibitor. I am fully aware and acknowledge that horse sports and the Competition involve inherent dangerous risks of accident, loss, and serious bodily injury including broken bones, head injuries, trauma, pain, suffering, or death, ("Harm"). I AGREE to hold harmless and release the Federation and the Competition from all claims for money damages or otherwise for any Harm to me or my horse and for any Harm of any nature caused by me or my horse to others, even if the Harm arises or results, directly or indirectly, from the negligence of the Federation or the Competition. I AGREE to expressly assume all risks of Harm to me or my horse, including Harm resulting from the negligence of the Federation and to hold them harmless with respect to claims for Harm to me or my horse, and for claims made by others for any Harm caused by me or my horse while at the Competition. I have read the Federation Rules about protective equipment, including GR801 and, if applicable, EV114, and I understand that I am entitled to wear protective equipment without penalty, and I acknowledge that the Federation strongly encourages me to do so while participating in the Competition. I AGREE to assume all of the obligations of this Release on behalf of myself and my horse. I have the requisite training, coaching and abilities to safely compete in this competition. I AGREE that if I am injured at this competition, the medical personnel treating my injuries may provide information on my injury and treatment to the Federation on the official USEF accident/injury report form. BY SIGNING BELOW, I AGREE to be bound by all applicable Federation Rules and all terms and provisions of this entry blank and all terms and provisions of this Prize List. If I am signing and submitting this Agreement electronically, I acknowledge that my electronic signature shall have the same validity, force and effect as if affixed by my signature by my own hand.</p>						
<p align="center">PRIZE MONEY RECIPIENT INFORMATION MUST BE COMPLETED</p>						
<p>Taxpayer Name _____ Social Security or Federal ID # _____ Address _____ City, State, Zip _____</p>						
<p>Emergency Contact During Show _____ Contact's Phone _____</p>						
<p>Stabling requests require separate Stabling Reservation form and pre-payment for all stalls. Feed and bedding are to be ordered directly from Tri-County Feeds.</p>						
<p>Coggins <input type="checkbox"/> EHV <input type="checkbox"/> Pre Paid Check # _____ Amount _____</p>						
<p>CREDIT CARD INFORMATION Card must be present at checkout. Card Number _____ Year _____ CW Code _____ Signature _____ Printed Name _____ Billing Address _____ City, State, Zip _____</p>						
<p>MCHS Stalls @ \$350 USHJA Show Pass \$30 USEF (\$15 D&M, \$8 USEF/) USHJA (\$7) Fee \$30 Safety Fee \$25 Non-Refundable Office Fee \$75 Late Fee (After Sept. 9) \$50 Non-Showing Fee \$100 Grounds Fee \$60 Camper \$325 TOTAL</p>						
<p align="center">OWNER/AGENT</p>						
Signature	Signature	Signature	Signature	Signature	Signature	Signature
Print Name	Print Name	Print Name	Print Name	Print Name	Print Name	Print Name
Address	Address	Address	Address	Address	Address	Address
City, State, Zip	City, State, Zip	City, State, Zip	City, State, Zip	City, State, Zip	City, State, Zip	City, State, Zip
Phone	Phone	Phone	Phone	Phone	Phone	Phone
Email	Email	Email	Email	Email	Email	Email
USEF#	USEF#	USEF#	USEF#	USEF#	USEF#	USEF#
<p align="center">TRAINER</p>						
Signature	Signature	Signature	Signature	Signature	Signature	Signature
Print Name	Print Name	Print Name	Print Name	Print Name	Print Name	Print Name
Address	Address	Address	Address	Address	Address	Address
City, State, Zip	City, State, Zip	City, State, Zip	City, State, Zip	City, State, Zip	City, State, Zip	City, State, Zip
Phone	Phone	Phone	Phone	Phone	Phone	Phone
Email	Email	Email	Email	Email	Email	Email
USEF#	USEF#	USEF#	USEF#	USEF#	USEF#	USEF#
<p align="center">COACH</p>						



WAIVER AND RELEASE OF LIABILITY, ASSUMPTION OF RISK AND INDEMNITY AGREEMENT

For and in consideration of United States Equestrian Federation, Inc. dba US Equestrian (“USEF”) allowing me, the undersigned, to participate in any capacity (including as a rider, driver, handler, vaulter, longeur, lessee, owner, agent, coach, official, trainer or volunteer) in a USEF sanctioned, licensed or approved event or activity, including but not limited to equestrian clinics, practices, shows, competitions and related or incidental activities and Middleburg Classic (“USEF Event” or “USEF Events”); I, for myself, and on behalf of my spouse, children, heirs and next of kin, and any legal and personal representatives, executors, administrators, successors,, and assigns, hereby agree to and make the following contractual representations pursuant to this Agreement (the “Agreement”):

A. RULES AND REGULATIONS: I hereby agree that I have read, understand, and agree to be bound by all applicable Federation Bylaws, rules, and policies including the USEF Safe Sport Policy and Minor Athlete Abuse Prevention Policies as published at www.usef.org, as amended from time to time.

B. ACKNOWLEDGMENT OF RISK: I knowingly, willingly, and voluntarily acknowledge the inherent risks associated with the sport of equestrian and know that horseback riding and related equestrian activities are inherently dangerous, and that participation in any USEF Event involves risks and dangers including, without limitation, the potential for serious bodily injury (including broken bones, head or neck injuries), sickness and disease (including communicable diseases), trauma, pain & suffering, permanent disability, paralysis and death; loss of or damage to personal property (including my mount & equipment) arising out of the unpredictable behavior of horses; exposure to extreme conditions and circumstances; accidents involving other participants, event staff, volunteers or spectators; contact or collision with other participants and horses, natural or manmade objects; adverse weather conditions; facilities issues and premises conditions; failure of protective equipment (including helmets); inadequate safety measures; participants of varying skill levels; situations beyond the immediate control of the USEF Event organizers and competition management; and other undefined, not readily foreseeable and presently unknown risks and dangers (“Risks”).

CAUTION: HORSEBACK RIDING AND EQUINE ACTIVITIES CAN BE DANGEROUS. RIDE AT YOUR OWN RISK.:

Under VA Code Ann. Sec 3.2-6200-6203, an equine activity sponsor or equine professional is not liable for any injury to, or the death of, a participant in equine activities resulting from the inherent risks of equine activities.

C. ASSUMPTION OF RISK: I understand that the aforementioned Risks may be caused in whole or in part or result directly or indirectly from the negligence of my own actions or inactions, the actions or inactions of others participating in the USEF Events, or the negligent acts or omissions of the Released Parties defined below, and I hereby voluntarily and knowingly assume all such Risks and responsibility for any damages, liabilities, losses, or expenses that I incur as a result of my participation in any USEF Events. I also agree to be responsible for any injury or damage caused by me, my horse, my employees or contractors under my direction and control at any USEF Event.

D. WAIVER AND RELEASE OF LIABILITY, HOLD HARMLESS AND INDEMNITY: In conjunction with my participation in any USEF Event, I hereby release, waive and covenant not to sue, and further agree to indemnify, defend and hold harmless the following parties: USEF, USEF Recognized Affiliate Associations, the United States Olympic & Paralympic Committee (USOPC), USEF clubs, members, Event participants (including athletes/riders, coaches, trainers, judges/officials, and other personnel), the Event owner, licensee, and competition managers; the promoters, sponsors, or advertisers of any USEF Event; any charity or other beneficiary which may benefit from the USEF Event; the owners, managers, or lessors of any facilities or premises where a USEF Event may be held; and all directors, officers, employees, agents, contractors, and volunteers of any of the aforementioned parties (**Individually and Collectively, the “Released Parties” or “Event Organizers”**), with respect to any liability, claim(s), demand(s), cause(s) of action, damage(s), loss, or expense (including court costs and reasonable attorney fees) of any kind or nature (“Liability”) which may arise out of, result from, or relate in any way to my participation in the USEF Events, including claims for Liability caused in whole or in part by the negligent acts or omissions of the Released Parties.

E. COMPLETE AGREEMENT AND SEVERABILITY CLAUSE: This Agreement represents the complete understanding between the parties regarding these issues and no oral representations, statements or inducements have been made apart from this Agreement. If any provision of this Agreement is held to be unlawful, void, or for any reason unenforceable, then that provision shall be deemed severable from this Agreement and shall not affect the validity and enforceability of any remaining provisions.

I HAVE CAREFULLY READ THIS DOCUMENT IN ITS ENTIRETY, UNDERSTAND ALL OF ITS TERMS AND CONDITIONS, AND KNOW IT CONTAINS AN ASSUMPTION OF RISK, RELEASE AND WAIVER FROM LIABILITY, AS WELL AS A HOLD HARMLESS AND INDEMNIFICATION OBLIGATIONS.

By signing below, that I have read, understand, and agree to be bound by all applicable Federation Bylaws, rules, and policies including the USEF Safe Sport Policy and Minor Athlete Abuse Prevention Policies as published at www.usef.org, as amended from time to time, as well as all terms and provisions of this Prize List. If, despite this Agreement, I, or anyone on my behalf or the minor’s behalf, makes a claim for Liability against any of the Released Parties, I will indemnify, defend and hold harmless each of the Released Parties from any such Liabilities as the result of such claim.

The parties agree that this agreement may be electronically signed. The parties agree that the electronic signatures appearing on this agreement are the same as handwritten signatures for the purposes of validity, enforceability, and admissibility.

RIDER/DRIVER/HANDLER/VAULTER/LONGEUR OWNER TRAINER OFFICIAL STAFF VOLUNTEER COACH (IF APPLICABLE)

Signature: _____ Date: _____ Print Name: _____

Parent/Guardian Signature: (Required if Rider/Driver/Handler/Vaulter/Longeur is a minor) _____ Date: _____

Print Parent//Guardian Name: _____ Emergency Contact Phone No. _____

MIDDLEBURG CLASSIC

2023 STABLING RESERVATION FORM

PLEASE MAKE ALL CHECKS PAYABLE TO MIDDLEBURG CLASSIC

Trainer Name _____ Cell Phone # _____
 Email _____ Arrival Date _____

		Tack/ Feed Stalls	# Stalls
	Name of Owner	Horse's Show Name	
1			
2			
3			
4			
5			
6			
7			
8			
9			
10			
11			
12			
13			
14			
15			
Total:			
Stabling Requests:			

Please note that stalls are filled on a first come first serve basis. Special requests will be honored if possible.
 Stalls are \$350 per horse for the week. Prepayment must be made in full in order to secure stalls. Please make check payable to
 "Middleburg Classic Horse Show" or make credit card payment by phone: 727-417-6052.

office@middleburgclassic.com

Feed and bedding will be handled and billed through the horse show office

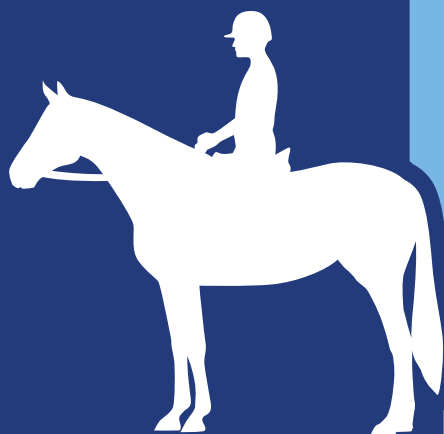
USEF Competition Name: Middleburg Classic & Piedmont Jumper Classic

USEF#: 7308 / 338889

Competition Division(s) and Rating(s): AA rated- High Performance, Conformation, Green Conformation, High Performance, Green Performance 3'3" & 3'6", Amateur Owner 3'6" and 3'3", Junior 3'6", Junior 3'3", Regular Pony, Green Pony, C

C' Rated-Adult Amateur, Childrens, Childrens Pony, Small 3', Thoroughbred

Piedmont Jumper Classic- Jumper Level 4



MAAP

MINOR ATHLETE ABUSE PREVENTION

LEARN ABOUT MAAP POLICIES



SafeSport Training



One-On-One Interactions



Local Travel



Social Media and
Electronic Communications



Read about these and more at
usef.org/MAAPP

REPORT MAAP POLICY VIOLATIONS



usef.org/safe-sport/reporting
859-225-6915



Standlee/USHJA National Hunter Derby Regional Championships



JERRY MOHME PHOTOGRAPHY

Offered in Three Sections:
Open, Amateur and Junior

Two Round Format:
Classic Round followed by
a Handy Round

Earn HOTY Bonus Points

No qualifying required!



SCAN FOR MORE
INFORMATION

North Championship:

Princeton Summer Encore
Princeton, NJ

August 23-27, 2023

South Championship:

Tryon Summer 5
Mill Spring, NC

July 11-16, 2023

North Central Championship

Split Rock Hunter Jumper Classic II
Lexington, KY

June 13-18, 2023

South Central Championship:

Southwest Showdown
Katy, TX

September 20-24, 2023

Northwest Championship:

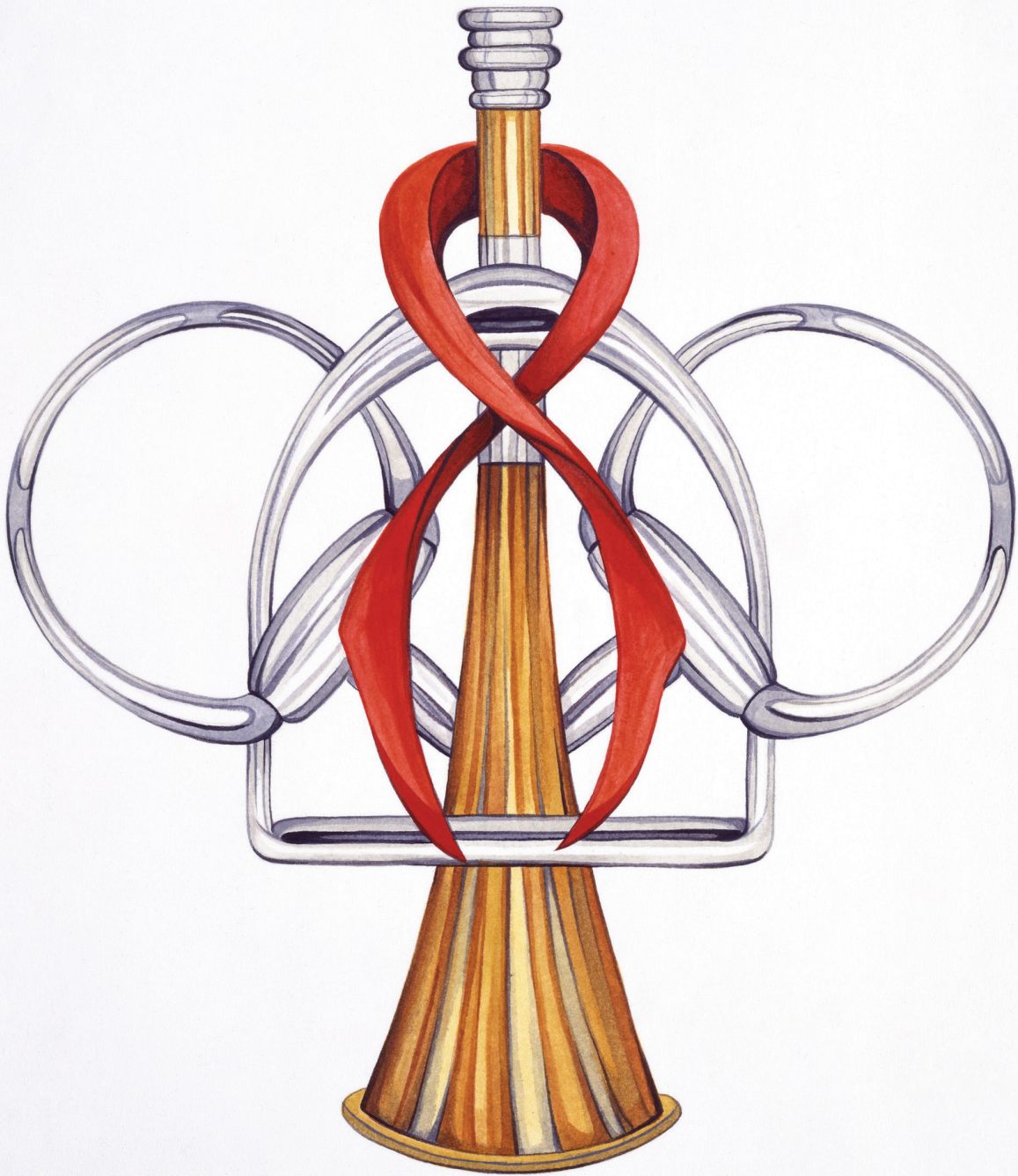
Oregon Summer
Wilsonville, OR

August 23-27, 2023

Southwest Championship:

Blenheim June Classic 2
San Juan Capistrano, CA

June 21- 25, 2023



Many thanks to Jane Gaston for creating this iconic artwork for the Middleburg Classic.



**MIDDLEBURG
• CLASSIC •**

Piedmont Jumper Classic

PO Box 601, Upperville, VA 20185